



# **ALS MATS**

## **Web Portal**

## **And Mobile Portal**

## **Instruction**

## **Manual**

[datamgr.mats@alsglobal.com](mailto:datamgr.mats@alsglobal.com)



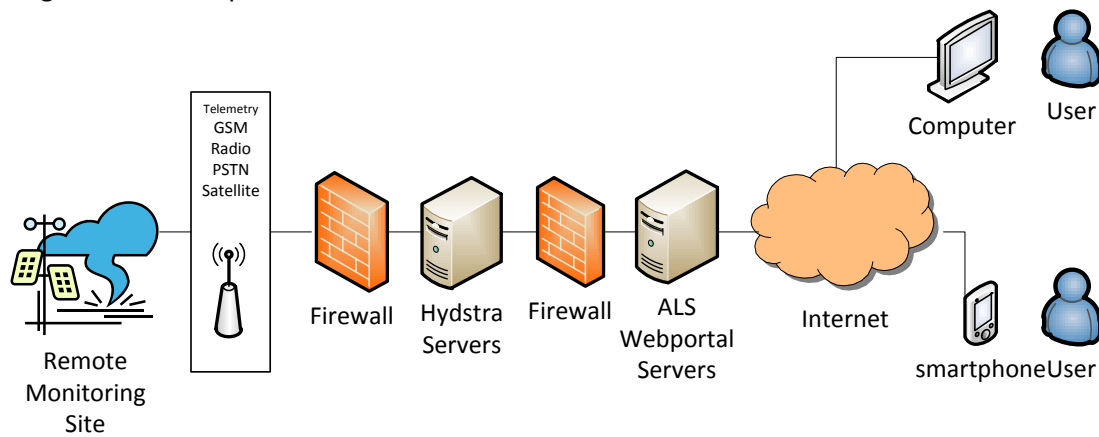
## Contents

- 1. Introduction ..... 2
- 2. Front Screen ..... 3
- 3. Operation ..... 4
- 4. Plug-In's for Viewing AVI Videos ..... 7
- 5. Mobile Hydstra Web Portal ..... 8

## 1. Introduction

ALS installs and operates remote hydrometric and meteorological monitoring sites on behalf of clients. The data from these sites is telemetered to our Hydstra system which forwards the data through to the ALS Webportal.

The ALS Web portal enables clients to view data from their sites using any standard web browser (however Mozilla Firefox is the preferred). The ALS Webportal can also be viewed on a mobile application for android and iPhone users. The web portal not only provides access to data, but also documents, images, sound files and videos may be accessed through the ALS Webportal.

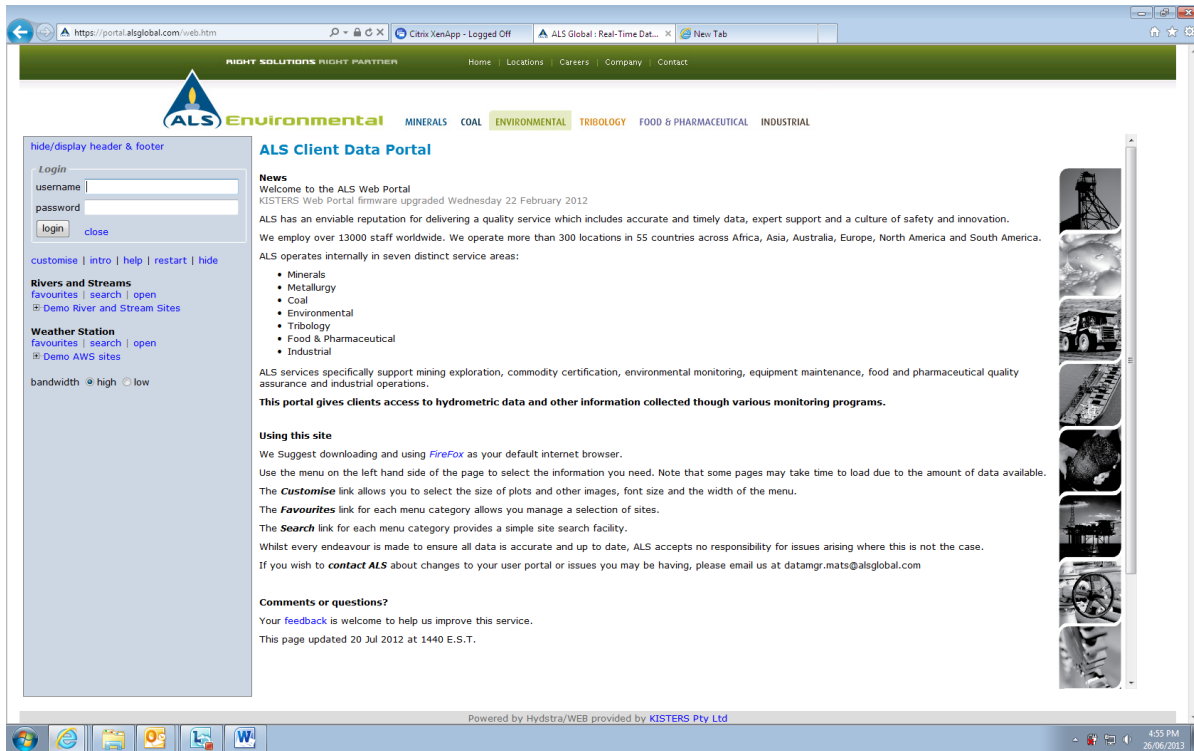


The address of the ALS Webportal is <https://portal.alsglobal.com/web.htm>

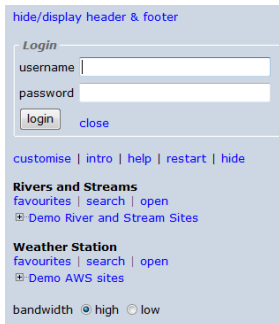
Minimum browser requirements: Internet Explorer 7 or 8, or Firefox 3, Screen size not less than 1024 by 768 pixels, Javascript and cookies must be enabled, Internet Explorer security level Medium (Internet Options.. -> Security)



## 2. Front Screen



Each client has a dedicated username and password which can be obtained from the ALS MATS Data Group [datamgr.mats@alsglobal.com](mailto:datamgr.mats@alsglobal.com)



### The Menu

The **hide/display header & footer** link switches off the header and footer display allowing more screen space if required.

**Customise** allows you to individually change the font size, image size and frame size

**Intro** repeats the introduction screen information

**Help** provides a brief help message on running the portal

**Restart** refreshes the screen

**Hide** Toggles the menu on and off

**Bandwidth** allows you to select the most appropriate bandwidth for your region

For the purpose of this instruction manual, we will concentrate on the demo sites which allow us to bypass the username and password.



Select

Demo river and stream sites

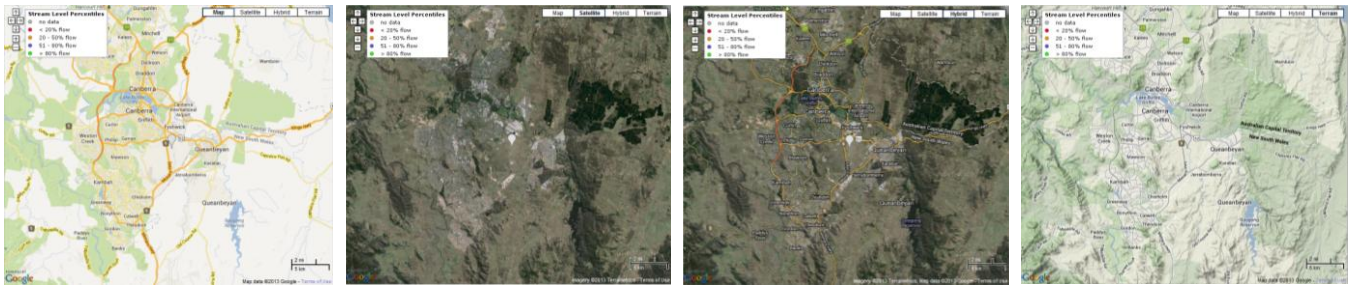
EQ0801 Jerra @ Hindmarsh Dr

This will display a google map image of the site location and surrounds.

The type of google map can be adjusted by selecting Map, Satellite, Hybrid or Terrain as shown below



### 3. Operation



Clicking on a site will reveal current data and information, but as the information is loading you may be given a security warning, “Do you want to view only the webpage content that was delivered securely?”, select “No”.

This warning is only evident with Internet Explorer, and relates to different security settings associated with the Google Maps image that is embedded ‘live’ in the pages.

Click on EQ0801 Jerra @ Hindmarsh Dr

| Variable          | Value  | Time             | Direction |
|-------------------|--------|------------------|-----------|
| Level (Metres)    | 1.929  | 14:00 26/06/2013 | ↓         |
| Level (Metres)    | -1.000 | 14:00 26/06/2013 | →         |
| Level (Metres)    | 0.956  | 14:00 26/06/2013 | ↓         |
| DO (% saturation) | 0      | 14:00 26/06/2013 | →         |
| Logger Voltage    | 12.510 | 00:00 26/06/2013 | →         |
| WaterTemp(DegC)   | 0      | 14:00 26/06/2013 | →         |
| pH                | 0      | 14:00 26/06/2013 | →         |
| Turbidity         | 0      | 14:00 26/06/2013 | →         |
| EC (uS/cm)        | 0      | 14:00 26/06/2013 | →         |

Once through the security warning, you are presented with 4 tabs and a Google Map. By default, the first tab shows the most recent data for that particular station, as well as some summary plots at the bottom. The age of the data is typically set by the update frequency of the site.

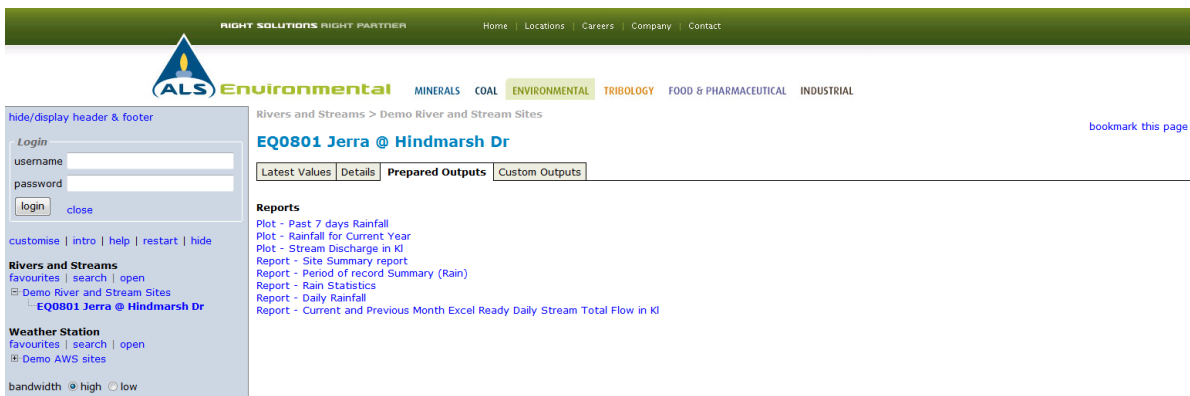
The second Tab “Details” shows some site information, period of record, max and min values etc.

| Variable                  | Start date | End date   | Days | Data type           | Max value | Max date   | Min value | Min date   |
|---------------------------|------------|------------|------|---------------------|-----------|------------|-----------|------------|
| 100.00 Level (Metres)     | 17/07/2012 | 26/06/2013 | 344  | Instantaneous value | 3.317     | 11/10/2012 | 1.536     | 02/08/2012 |
| 140.00 Discharge (Cumecs) | 17/07/2012 | 26/06/2013 | 344  | Instantaneous value | 12.520    | 11/10/2012 | 0         | 02/08/2012 |
| 300.00 Logger Voltage     | 26/09/2008 | 26/06/2013 | 1734 | Instantaneous value | 12.820    | 27/02/2013 | 0         | 05/03/2012 |
| 450.00 WaterTemp(DegC)    | 17/07/2012 | 26/06/2013 | 344  | Instantaneous value | 0         | 17/07/2012 | 0         | 17/07/2012 |
| 804.00 pH                 | 17/07/2012 | 26/06/2013 | 344  | Instantaneous value | 0         | 17/07/2012 | 0         | 17/07/2012 |
| 810.00 Turbidity          | 17/07/2012 | 26/06/2013 | 344  | Instantaneous value | 0         | 17/07/2012 | 0         | 17/07/2012 |
| 820.00 EC (uS/cm)         | 17/07/2012 | 26/06/2013 | 344  | Instantaneous value | 0         | 17/07/2012 | 0         | 17/07/2012 |
| 1152.00 DO (% saturation) | 17/07/2012 | 26/06/2013 | 344  | Instantaneous value | 0         | 17/07/2012 | 0         | 17/07/2012 |



**Operation**

The third Tab “Prepared Outputs” has some plots that are automatically generated. These have been established based on information clients would be most likely to require regularly. Clients can advise if there are other plots they may require regularly which we can set up as prepared outputs.

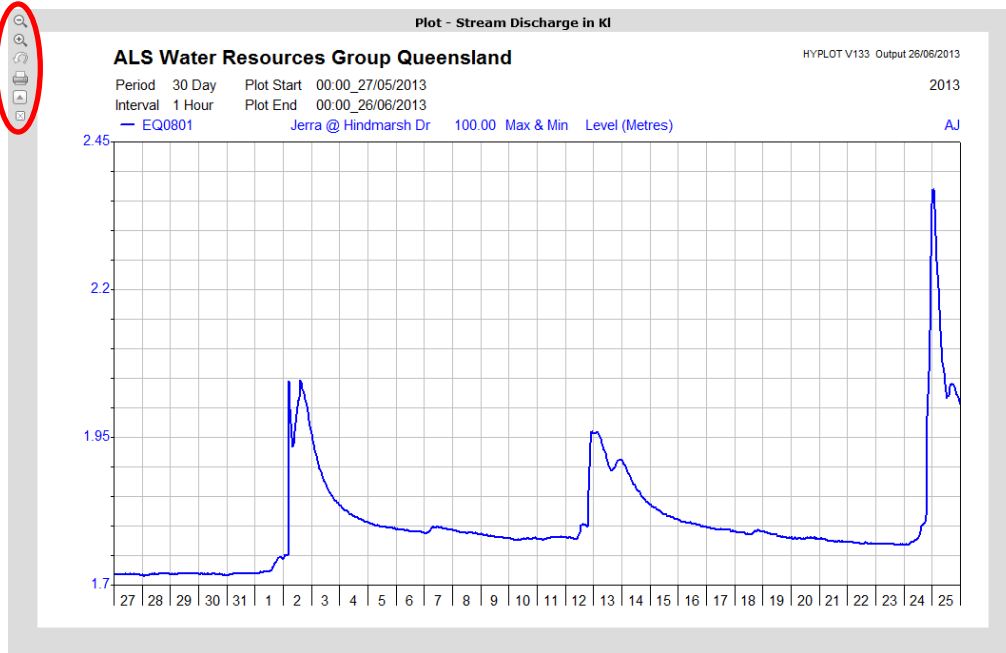


An explanation of the plot icons are shown below



After clicking on the link and the plot is displayed, you can use the small icons on the left of the plot to zoom, print or close the plot.

To save the plot, simply right click on it and select “save picture as”.



Of particular use for smaller computer monitors is the ability to open the plot in a new window, by clicking on the up arrow in these icons. An explanation of each of the icons on the plot page is shown below.



**Operation**

|  |                               |
|--|-------------------------------|
|  | Zoom in                       |
|  | Zoom out                      |
|  | Reset (back to original zoom) |
|  | Print                         |
|  | Open in new window            |
|  | Close                         |

The fourth Tab is “Custom Outputs” which lets you select any of the available parameters to be exported as a plot, table or csv download.

As the name suggests, users can customise these outputs and have control over;

- number of parameters reported
- start and end dates
- start and end time
- Reporting interval (how long between data points)
- Selecting plots, tables or CSV style downloads

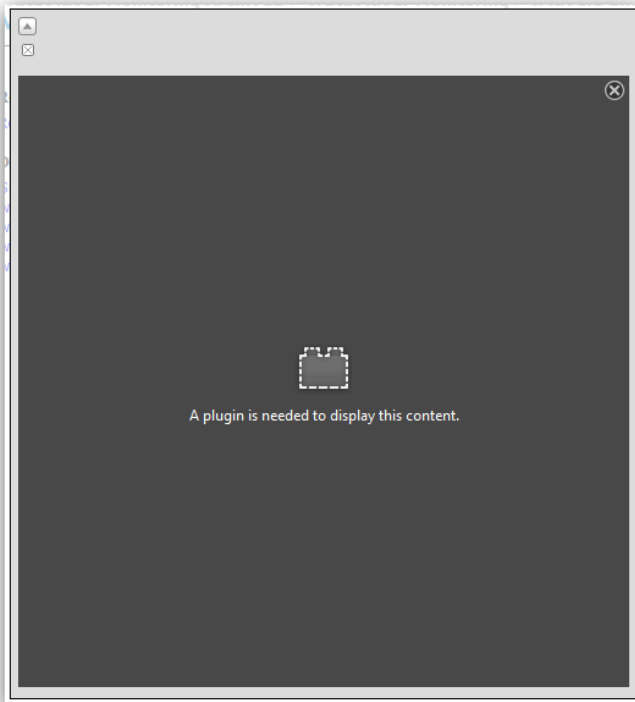
A special case for custom outputs is when selecting POINT data interval. This will return every individual data point exactly when recorded. This option will only work when selecting a single parameter at a time.

It is worth noting all recorded data for the site is available through Custom Outputs. Selection of a large period of record may take considerable time to report.

The screenshot shows the ALS Environmental website interface. At the top, there is a navigation bar with the ALS logo and the text "Environmental MINERALS COAL ENVIRONMENTAL TRIBOLOGY FOOD & PHARMACEUTICAL INDUSTRIAL". Below this, the page title is "EQ0801 Jerra @ Hindmarsh Dr". The "Custom Outputs" tab is selected, displaying a list of parameters with checkboxes and date ranges (17/07/2012 to 26/06/2013). The parameters listed are: Stream Water Level (Metres), Stream Discharge (Cumeecs), Logger Battery Voltage (Volts), Water Temperature-continuous (Degrees Celsius), pH (pH units) (unit), Turbidity (NTU), Electrical Conductivity (Raw) (MicroSiemens/cm), and Oxygen (Dissolved) (percent saturation). At the bottom of the list, there are dropdown menus for "Period" (set to "All data") and "Output" (set to "Plot"), along with a "Get Output" button.

## 4. Plug-In's for Viewing AVI Videos

Some WebPortal pages have site specific avi videos for viewing under the PREPARED OUTPUTS tab. When viewing in FIREFOX, if the required Plug-In is not installed a prompt box will appear as follows;

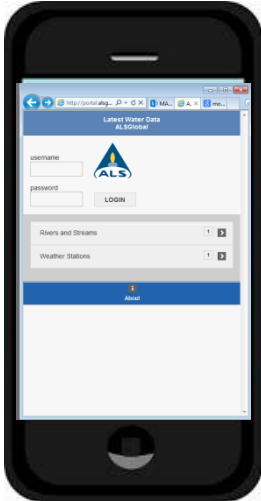


To rectify this click on the following link and follow required directions;

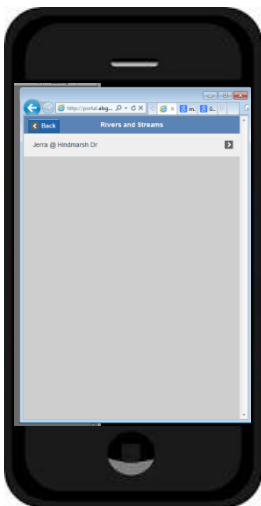
<https://support.mozilla.org/en-US/kb/play-windows-media-files-in-firefox>

## 5. Mobile Hydstra Web Portal

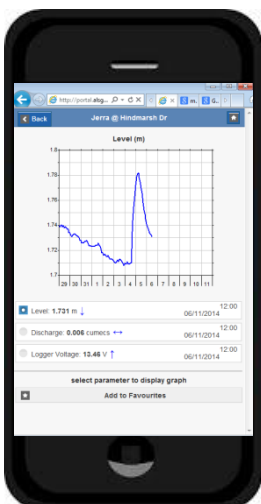
To access the mobile portal on any smartphone enter the following URL <http://portal.alsglobal.com/mobile/>



Enter Username and Password and click login



Select the data type



View data on screen

Click parameter to view plot

Press back to return to the main screen





If you wish to **contact ALS** about your  
ALS Webportal and ALS Mobile Webportal  
or to report issues you may be having, please email us at  
**[datamgr.mats@alsglobal.com](mailto:datamgr.mats@alsglobal.com)** (*during business hours*)  
**[data.alert@alsglobal.com](mailto:data.alert@alsglobal.com)** (*out of hours*) or  
**for urgent contact outside normal business hours,  
please call the 24/7 number 0447879517**